

HARDIGG
STORM CASE[®]
Defy the Elements[®]



The Ultimate Protective Solution[™]
(Extreme Frozen Drop Test pictured)

Hardigg Confidence is Standard Equipment.

For over half a century Hardigg has been the top name in engineering and designing high-tech transport cases for the United States Military. Now that level of confidence is available to everyday technicians, travelers, sportsmen, photographers and outdoorsmen — anyone who requires sensitive electronics or vital equipment to travel with them into damaging environments.

Lightweight and rugged, Storm Cases are the result of years of perfecting and testing in both the laboratory and the field. The resulting watertight, airtight and impact-resistant systems outperform other cases by design, even under extreme conditions. From the proprietary HPX® plastic resin that holds up sixteen-times better during low-temperature impact testing, to the patented Press & Pull® latch that opens easily yet is 400 lbs stronger, every facet of these lightweight cases has been created to better defend your vital gear.

Storm Cases have been designed to meet or exceed military testing requirements and will protect your gear. Many are airline size appropriate. All are internationally shippable and guaranteed for life. When it comes to confidence, Storm Case quite simply packs in more.



STORM CASE Defy the Elements



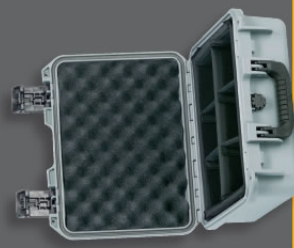
Interior Length 9.5" / 241 mm
Width 7.5" / 191 mm
Height 4.3" / 108 mm
Exterior Length 11.8" / 299 mm
Width 9.8" / 248 mm
Height 4.7" / 119 mm

iM2060 Perfect for handheld electronics, digital and video cameras and small equipment, customizable inserts boast unbeatable stability and tailored protection.
Case Weight—Empty 2.7 lbs. / 1.2 kg



Interior Length 9.5" / 241 mm
Width 7.5" / 191 mm
Height 7.3" / 184 mm
Exterior Length 11.8" / 299 mm
Width 9.8" / 248 mm
Height 7.7" / 195 mm

iM2075 Added depth can accommodate everything from larger, bulkier items to several layers of equipment within lockable security.
Case Weight—Empty 3.3 lbs. / 1.5 kg



Interior Length 13.0" / 330 mm
Width 9.2" / 234 mm
Height 6.0" / 152 mm
Exterior Length 14.2" / 360 mm
Width 11.4" / 290 mm
Height 8.5" / 165 mm

iM2100 When equipment or gear changes out or requires more organization, padded divider options are available in most models.
Case Weight—Empty 4.2 lbs. / 1.9 kg

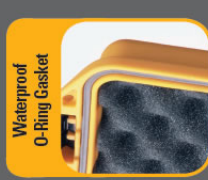


Interior Length 15.0" / 381 mm
Width 10.5" / 267 mm
Height 6.0" / 152 mm
Exterior Length 16.2" / 411 mm
Width 12.7" / 323 mm
Height 8.6" / 168 mm

iM2200 Standard multilayered cubed foam can be customized to protect every piece of equipment perfectly from impact and jostling.
Case Weight—Empty 4.9 lbs. / 2.2 kg



Permanently Attached Vortex® Valve



Waterproof O-Ring Gasket





Interior Length	17.0" / 432 mm
Width	11.7" / 297 mm
Height	6.2" / 157 mm
Exterior Length	18.2" / 462 mm
Width	12.8" / 320 mm
Height	6.7" / 170 mm

iM2300 Optional lid organizers and configurable padded dividers make it easy to customize your protection to varying needs.
Case Weight - Empty 5.8 lbs. / 2.6 kg



Interior Length	17.0" / 432 mm
Width	6.3" / 160 mm
Height	6.2" / 157 mm
Exterior Length	18.2" / 462 mm
Width	8.4" / 213 mm
Height	6.7" / 170 mm

iM2306 Longer or more complex pieces of equipment like night-vision scopes, rifle scopes, laser sights or monoculars can find the perfect fit within this case for the ultimate in transport protection.
Case Weight - Empty 4.3 lbs. / 2.0 kg



Interior Length	18.2" / 462 mm
Width	12.1" / 307 mm
Height	5.2" / 132 mm
Exterior Length	20.0" / 508 mm
Width	14.7" / 373 mm
Height	5.8" / 147 mm

iM2370 Shoulder straps, lid organizers, folders and foam inserts can customize your case for a variety of gear, electronics, ammunition, paperwork and parts.
Case Weight - Empty 5.7 lbs. / 2.6 kg

Battle-Tested Toughness

Since its start, Hardigg has proudly worked for and with the United States Military to ensure every piece of sensitive equipment, technology and sophisticated weaponry deploys fully operational – no matter how rugged the transport or the conditions.

Storm Case, made in the USA, bridges the gap between military grade and user-friendliness so well that personnel order them both on and off duty. After all, if it's tough enough to withstand the heat, impact and terrain of battle – it's tough enough to protect at home.

When it comes to the toughest cases in the field, you can rely on the same level of quality and assurance as the United States Military with a confidence unparalleled by other cases.



Extremely Durable HPX® Resin



Double-Layered Cushioned Handle

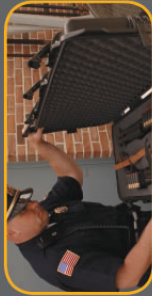


iM3100 featured
Hunters, sports enthusiasts and shooting professionals enjoy the military-tough confidence of Storm Case to pack their expensive, sensitive and vital weapons. Rolling casters, customizable foam and multiple locking hasps ensure the transport remains comfortable and safe for both user and weapon.

Defensive Procedures

When it comes to protecting the public, fast access can mean the difference between success and failure. Storm Case reliability is a favorite of police and security personnel because of the speed and confidence that arrives built in. From weapon cases to computers and high-tech equipment —professionals depend on Storm Case when lives are on the line.

Temperature and water resistance partners with built-in durability to ensure that delicate instrumentation, surveillance gear and communication devices all make it to the scene ready to perform, no matter when or where. And as new technologies emerge with more sensitive electronics, their transport becomes even more vital to both local and national defenders.



Interior Length
18.0" / 457 mm
Width
13.0" / 330 mm
Height
8.4" / 213 mm
Exterior Length
19.2" / 488 mm
Width
13.3" / 338 mm
Height
9.0" / 229 mm

iM2450 Fast access and complete protective organization make these cases perfect for field work, investigation or crime scene documentation.

Case Weight—Empty 7.4 lbs. / 3.3 kg



Interior Length
18.0" / 457 mm
Width
13.0" / 330 mm
Height
6.7" / 170 mm
Exterior Length
19.2" / 488 mm
Width
13.2" / 336 mm
Height
7.3" / 185 mm

iM2400 Everything from evidence collection to complex electronics packs into this case with complete security thanks to customizable dividers and a thick layer of foam.

Case Weight—Empty 6.5 lbs. / 2.9 kg



Interior Length
20.5" / 521 mm
Width
11.5" / 292 mm
Height
7.2" / 183 mm
Exterior Length
21.7" / 551 mm
Width
14.1" / 358 mm
Height
8.9" / 226 mm

iM2500 Larger pieces of equipment roll onto the scene with ease thanks to rolling casters. Whether it's weapons, emergency gear or high-tech electronics, reliability saves lives.

Case Weight—Empty 11 lbs. / 4.9 kg

iM2200 featured

If there's one piece of equipment that police and security forces must depend on, it's weapons. Nothing packs them more confidently than a Storm Case.



Rugged
In-Line Wheels



Padlocking
Molded-in Hinges



Interior Length
20.0" / 508 mm
Width
14.0" / 356 mm
Height
7.7" / 196 mm
Exterior Length
21.2" / 538 mm
Width
16.0" / 406 mm
Height
8.3" / 211 mm

iM2600 Storm Case is in the business of protection, so you can focus on your own profession. Pressure, temperature and even water are blocked to protect your most sensitive materials.
Case Weight—Empty 8.5 lbs. / 3.9 kg



Interior Length
22.0" / 559 mm
Width
17.0" / 432 mm
Height
8.0" / 203 mm
Exterior Length
24.6" / 625 mm
Width
19.7" / 500 mm
Height
8.6" / 218 mm

iM2700 Dropped, soaked, kicked or frozen — there's no limit to what Storm Case can protect your livelihood from while you're traveling.
Case Weight—Empty 11.1 lbs. / 5.0 kg

iM2370 featured

Whether your job takes you into the field literally or figuratively, Storm Case options can make your case a reliable, virtual office anywhere, through any kind of rough transport. When your livelihood demands functioning equipment, you demand a Storm Case.



Flush, Powerful Hinges



Impact-Resistant



Interior Length
20.0" / 508 mm
Width
14.0" / 356 mm
Height
10.0" / 254 mm
Exterior Length
21.2" / 538 mm
Width
16.0" / 407 mm
Height
11.7" / 297 mm

iM2520 Laptops, field equipment, prototypes, machinery — whatever your business requires — dependably survive even airport handling. Many meet carry-on regulations.
Case Weight—Empty 8.5 lbs. / 3.9 kg



Built-In Confidence

Traveling with computers, technology and sensitive equipment demands transport solutions that stand up to the most punishing treatment. Although many Storm Cases meet carry-on regulations, those that don't can be checked with amazing confidence. Engineered to survive direct impacts, every feature is designed to withstand abuse. From rounded corners to molded-in hardware, the protection against impact and tampering is complete, inside and out.

Smooth rolling wheels, retractable handles and flat hinges make airport negotiation a breeze. Whether technology is your business or runs it, arriving fully operational with confidence can make the difference. No other case protects with as much durability as Storm Case.





Lifesaving Dependability

Rescue operations and medical emergencies demand not only the speediest access to lifesaving equipment, they demand reliability. When it comes to packing diagnostic, emergency and medical gear for operations, no other profession depends more on the confidence of Storm Case. Latches open quickly and smoothly, organizational inserts make finding the right equipment a snap and, no matter how difficult the transport, everything arrives ready to perform.

Breathing apparatuses to defibrillators arrive on the scene cushioned in foam and protected from impact, temperature and tampering, ready for immediate use – so that firefighters, EMTs and rescue professionals can focus on their training and performance. When it comes to protecting the gear that saves lives, Storm Case packs in confidence.



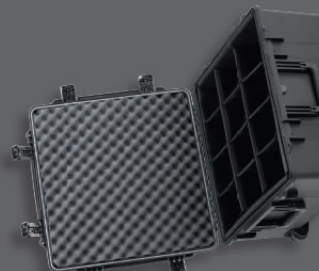
Interior Length	22.0" / 559 mm
Width	17.0" / 432 mm
Height	10.0" / 254 mm
Exterior Length	24.6" / 625 mm
Width	19.7" / 500 mm
Height	11.7" / 297 mm

iM2720 Fast response and access can save lives at the scene. Storm Case options ensure each piece of gear – medical, investigative or rescue – is at hand and is fully operational.
Case Weight–Empty 16.8 lbs. / 7.6 kg



Interior Length	22.0" / 559 mm
Width	17.0" / 432 mm
Height	12.7" / 323 mm
Exterior Length	24.6" / 625 mm
Width	19.7" / 500 mm
Height	14.4" / 366 mm

iM2750 Lifesaving equipment must withstand possible impact, heat and chemicals before reaching victims. Storm Case ensures fast access, as well as protection.
Case Weight–Empty 18.5 lbs. / 8.4 kg



Interior Length	22.5" / 572 mm
Width	21.1" / 536 mm
Height	11.4" / 290 mm
Exterior Length	24.9" / 632 mm
Width	22.7" / 602 mm
Height	13.1" / 333 mm

iM2875 With added depth, everything from breathing apparatuses to communication devices can pack into a reliable container for quick, on-the-scene deployment.
Case Weight–Empty 20.1 lbs. / 9.1 kg

Fully Customizable

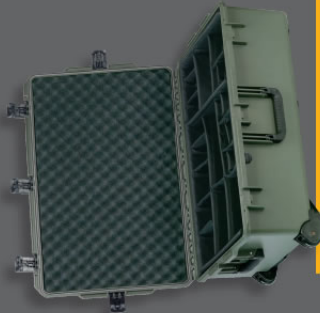
Lid organizers, partitions and pocket options provide immediate access with the confidence of equipment reliability. Specialized technology, delicate instrumentation and small parts remain at hand no matter how rugged the trip or extreme the conditions.



Customizable Foam Inserts

Telescoping Handle

iM2575 Shown



Interior Length 29.0" / 737 mm
Width 18.0" / 457 mm
Height 10.5" / 267 mm
Exterior Length 31.3" / 795 mm
Width 20.4" / 518 mm
Height 12.2" / 310 mm

iM2950 Lightweight protection can be customized for every delicate lens, meter and sensitive film needed in the field.
Case Weight-Empty 20.8 lbs. / 9.5 kg



Interior Length 29.8" / 757 mm
Width 20.8" / 528 mm
Height 17.8" / 452 mm
Exterior Length 33.3" / 846 mm
Width 24.4" / 620 mm
Height 19.3" / 490 mm

iM3075 There's no limit to the organization and protection you can pack into your Storm Case. From supplies to backups – the only limit is your ability to think ahead.

Case Weight-Empty 31.5 lbs. / 14.3 kg

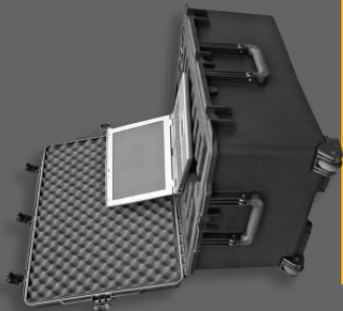
Photography Specialists

Successful professionals have been protecting expensive cameras, lenses, lighting and computers in harsh environments with Storm Cases for years. The right set of cases is a rolling studio on location.

Customizable Lid Stays



Equipment Ready Bezel Mounts



Interior Length 29.0" / 737 mm
Width 18.0" / 457 mm
Height 13.8" / 349 mm
Exterior Length 31.3" / 795 mm
Width 20.4" / 518 mm
Height 15.5" / 393 mm

iM2575 From the rolling casters to the engineered foam cavities, each case can be customized to get every piece of technology to the scene operational.

Case Weight-Empty 22.5 lbs. / 10.2 kg



Professional Grade Protection

Photographers, engineers, field technicians and industrial clients all depend on Storm Case organization, as well as protection, to ensure performance on the job. From optional custom-configurable padded dividers for small lenses and gear to the hard-shell protection and cushioning inside, success comes built into each case.

Options like bezel mounts, lid stays and shoulder straps not only add ease to moving sensitive diagnostic and delicate equipment, but also confidence while using them in any environment. Whether you are a hobbyist, professional or industrial business owner – Storm Case has the range of sizes and security to match your equipment for long-term performance and protection.



The Natural Selection

When it comes to protection in the great outdoors, Storm Cases have evolved to outperform the competition in comfort and performance. With a wide range of sizes, there's a case that can handle your weapons and gear with total confidence.

Impervious to water, impact, jostling and extreme temperature, Storm Case protects your firearms, keeps your ammunition dry and organized and maintains your emergency kit for any mishaps. Whether paddling into duck country by kayak, riding through rough country on a four-wheeler or camping miles away from civilization, Storm Case ensures dry, functioning equipment anywhere you go.



Interior Length
36.5" / 927 mm
Width
14.0" / 356 mm
Height
6.0" / 152 mm
Exterior Length
38.8" / 1011 mm
Width
16.5" / 419 mm
Height
6.7" / 169 mm

iM3100 Valuable and precision-sighted weapons pack and store with confident protection from water, heat and interference.
Case Weight—Empty 15.2 lbs. / 6.9 kg



Interior Length
44.0" / 1118 mm
Width
14.0" / 356 mm
Height
6.0" / 152 mm
Exterior Length
47.2" / 1198 mm
Width
16.5" / 419 mm
Height
6.7" / 169 mm

iM3200 Customized foam can pack your most valuable and expensive equipment in complete impact-resistant protection, with molded-in, lockable hasps for extra security.
Case Weight—Empty 17.7 lbs. / 8.0 kg



Interior Length
44.0" / 1118 mm
Width
14.0" / 356 mm
Height
8.5" / 216 mm
Exterior Length
47.2" / 1198 mm
Width
16.5" / 419 mm
Height
9.2" / 234 mm

iM3300 Deeper models can make transport easier with wheels, fit multiple weapons and even allow accessories to remain in place.
Case Weight—Empty 20.4 lbs. / 9.3 kg



Interior Length
50.5" / 1283 mm
Width
14.0" / 356 mm
Height
6.0" / 152 mm
Exterior Length
53.8" / 1365 mm
Width
16.5" / 419 mm
Height
6.7" / 169 mm

iM3300 With a narrow profile for storage ease, these cases stack firmly with built-in, no-slip ribbing. They're the perfect combination of security and portability.
Case Weight—Empty 19 lbs. / 8.6 kg

Equipped for Outdoors

The right combination of Storm Cases can create portable camp headquarters anywhere with the guarantee of working electronics, sighted weapons, dry ammunition and total organization.



Smooth Rounded Impact Designed Corners



Easy Press & Pull® Latches

Engineered for Endurance

Whether you depend on your Storm Case for military, personal, professional, industrial or civilian use – there is no such thing as too much protection or too much comfort. The engineers at Hardigg understand and have been creating the most durable transport systems for the harshest conditions on Earth without losing sight of the human element. Every feature on Storm Case has been tested and engineered with purposeful attention to the end user. Handles are not just incredibly strong, but also more comfortable. Latches don't just hold tighter, they open more smoothly – even under pressure. Hinges aren't just molded in for extra holding power, they're flat for convenient testing.

No other case is as lightweight or as ergonomically designed for the highest degree of protection as Storm Case. Only Storm Case has been developed with the dedication of Hardigg engineers to survive the harshest environments of the United States Military.



Telescoping Handle

Along with wheels, many models boast retractable handles for easy transportation.



Customizable Foam Inserts

Storm Case comes standard with easily customizable cubed foam that conforms to your exact needs for the finest protection possible.

HPX[®] High Performance Resin

The lightweight plastic of Storm Case stands up to impact better than the competition, even under extreme temperatures and drops.



Flat Edge Hinges

Set a Storm Case down anywhere with convenient flat-resting hinges. Stronger than the competition.

Molded-In Stacking Ribs

In transit, the no-slip ribs of Storm Case stack multiple cases more securely, no matter how rough the trip.



Molded-In Lockable Hasps

Strength and reliability come with these molded-in loops, proven to excel over the competition.



Rounded Deflective Corners

The corners of Storm Case deflect and absorb impact, dispersing kinetic energy throughout the case to ensure contents remain safe drop after drop.



Press & Pull[®] Latches

These smooth-opening, dependable, patented latches hold tight under pressure and impact despite fast-opening performance, and they're twice as strong as the competition.



Double-Layer, Soft-Grip Handles

Tested and proven stronger, these comfort grips withstand heavy loads.



Vortex[®] Pressure Release Valve

The built-in technology of Storm Case's automatic pressure release valve is also a patented feature. Air can travel in to relieve pressure but dust, particles and water remain blocked. Plus, integrated into the case, Vortex[®] valves never get lost.



Rugged In-Line Wheels

Shielded from dust, dirt and other contaminants – ball bearing wheels provide low-friction, low-drag rolling for easy movement of heavy loads. Available on select models only.



Tested Performance

Storm Cases have been tested for endurance and performance in extreme temperatures. Feature by feature, Storm Case excels by design, from molded-in features to handles to our proprietary HPX® resin.

Storm Case molded-in lockable latches have been tested and proven to hold up against 40 lbs more pull than the competitor's latches. These stronger latches not only lock your valuable equipment more reliably, but can tie down during transport through the most rugged terrain.

When it comes to carrying your Storm Case, the double-layer, soft-grip handles feel like they've been engineered for pure comfort, but were actually designed to excel in strength. Laboratory testing proved the soft-grip handles hold up to 830 lbs more pull than the competitor's handles, which means no matter how heavy or vital the gear packed inside, it will remain safe in your hands.

Because Hardigg has been testing, innovating and upgrading the design of these rugged cases with and for the military for over half a century, the development of the unique HPX® resin of Storm Case was inevitable. Lighter, yet stronger than other plastics, this impact-resistant material truly separates Storm Case from the competition. Hit after hit, in the lab and in the field, Storm Case withstands impacts 78% better than the competition – and at minus 20 degrees Fahrenheit, Storm Case is 1600% better!

Storm Case is, quite simply, the most protective lightweight case available in the market today.



Latch Test:
Averages 10% Stronger



Handle Test:
630 lbs Stronger Handle



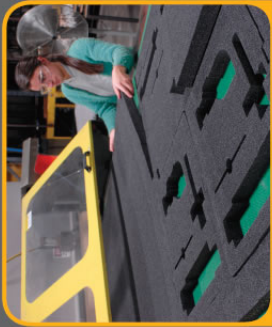
Drop Test:
1600% Stronger at -20°F

OUTPOWERS COMPETITION

Feature	Storm Case	Competition	Storm Case Advantage
Case Material	• HPX® High Performance Resin	• Polypropylene or ABS	• Better Impact Resistance • Lightweight, Guaranteed for Life
Latches	• Press & Pull Wide Design • Won't Pop Open	• Narrow "Knuckle Buster" Design • May Pop Open When Dropped	• Pain Free • Twice as Strong • More Secure Case Closure
Purge Valve	• Vorex® Valve • Won't Fall Out	• Manual Pressure Adjustment • Valve Screws Out (Could get lost)	• No Lost Valves • Automatically Adjusts
Carry Handle	• Durable Core With Soft Overlay	• Hard, One-piece Construction or Thinly Padded with Harder Rubber	• Stronger • More Comfortable to Carry
Extended Handle (Larger Cases)	• High Strength, Tubular Build	• Bulky, Heavy or Thin-rod Design	• Stronger and Lighter
Nameplate Area	• Adhesive Labels • Custom 3-D Option	• Adhesive labels	• Easy Customization • Permanent
Cubed Foam System	• Multi-layer Cubed Foam	• Single Layer Cubed Foam	• Highly Customizable • Construction • Create Easy Layers
Panel Mount System	• Extruded Aluminum Rails • Sealed Rivet Attachment • Variable Height	• Plastic Frame • Screwed to Interior	• Stronger • Permanent

EXTREME TESTING

Test	Specifications Met	Description
Drop Test	FED-STD-101C, Method 5007.1, Paragraph 6.3, Procedure A, Level A. Tests are superseded and concurrent with ASTM B 4189, DC-18, Assurance Level 1, Schedule A.	A series of 26 drops, one on each corner, edge, and face, from 19" to 30" depending on the gross weight of the case, with loads of 15 lbs to 70 lbs (depending on case size).
Falling Dart Impact	ATA 300, Category I, "General Requirements for Category I and II Reusable Containers"	A dart weighing 13.22 lbs with a 1.25" hemispherical end was dropped on each case from 19.68".
Vibration (loose cargo)	FED-STD-101C, Method 5019 Tests are superseded and concurrent with ASTM B 4169, DC-18, Assurance Level 1, Schedule F.	Each case was vibrated for 20 minutes per axis. 1-inch peak to peak at around 4.75 Hz.
Vibration (sweep)	ATA 300 (Jan 15/96) states in Appendix II, B.4 This test also exceeds the specifications listed in MIL-STD-648C and may also fulfill ISO 8318 and ISO 2247.	Vibration Test for Category I Containers — Vibration tests shall be conducted on Category I containers in accordance with ASTM Designation D-998, Procedure B, within the range of 5 to 50 cycles per second for a period of not less than 2 hours.
Simulated Rainfall	MIL-STD-810F, Method 506.4, Procedure II of 4.1.2 FED-STD-101C Method 5009.1, Sec 6.7.1 Tests are superseded and concurrent with ASTM B 4169, DC-18, Assurance Level 1, Schedule H.	Four inches of rain per hour for 20 minutes each side. This was followed by a 4-hour test at 4" per hour on the top. Both tests saw the case heated to 18°F higher than the water temp.
Immersion	MIL-STD-810F, Method 512.4	A 1-meter (3.281 feet) immersion for 1 hour with the case being heated to 40°F higher than the water temperature.



In-house die cut custom foam produces a precision fit for your equipment.



Bezel plates are engineered and stamped according to your specifications.



Foil heat stamped case identification available.

Hardigg Water Jet Shown

Customization Opportunities

Storm Case options tailor every case to fit your specific needs. From the customizable, multi-layered interior foam that comes standard with each case to the multitude of easily installed options – protection is increased with every tailored move towards your unique use.

Innovative engineering and design ensures every Storm Case fits your specific needs, while available options create the ultimate protective solution. Shoulder straps can make transport more comfortable. Lid stays can hold lids open for in-the-field use. Bezel mounts can secure diagnostic equipment for precision performance anywhere. Padded dividers separate small delicate instrumentation. Lid organizers perfect fast access and protection. And on larger cases, horizontal dividers can separate smaller items from bulky ones.

However, if you're struggling to find the perfect fit or combination of optional organizational features, Storm Case professionals can also customize options, including water jet-cut foam configurations and custom nameplates, to achieve your exact personal solution.



Hardigg's worldwide success is based on customization, interaction and innovation. With over 50 years of packaging experience, we will design and create a custom solution for your specific needs.



Die Cut Precision Foam Inserts



Custom Logo Direct Foil Heat Stamping



3D Molded-In Custom Logos




Variable Height Metal Bezel Kits



Multiple Color Latch Buttons

Storm Case Specifications



iM2050	9.5"	241 mm	7.5"	191 mm	4.3"	108 mm	11.8"	299 mm	9.8"	248 mm	4.7"	119 mm	2.7 lbs	1.2 kg
iM2075	9.5"	241 mm	7.5"	191 mm	6"	152 mm	11.8"	299 mm	9.8"	248 mm	7.7"	195 mm	3.3 lbs	1.5 kg
iM2100	13"	330 mm	9.2"	234 mm	6"	152 mm	14.2"	360 mm	11.4"	290 mm	6.5"	165 mm	4.2 lbs	1.9 kg
iM2200	15"	381 mm	11.7"	297 mm	6.2"	157 mm	18.2"	462 mm	13.4"	340 mm	6.7"	170 mm	5.8 lbs	2.6 kg
iM2300	17"	432 mm	13"	330 mm	6.7"	170 mm	19.2"	488 mm	15.3"	386 mm	9"	229 mm	7.4 lbs	3.4 kg
iM2370	18.2"	462 mm	13"	330 mm	6.7"	170 mm	19.2"	488 mm	15.3"	386 mm	9"	229 mm	7.4 lbs	3.4 kg
iM2400	18"	457 mm	13"	330 mm	8.4"	213 mm	19.2"	488 mm	15.3"	386 mm	9"	229 mm	7.4 lbs	3.4 kg
iM2450	18"	457 mm	13"	330 mm	8.4"	213 mm	19.2"	488 mm	15.3"	386 mm	9"	229 mm	7.4 lbs	3.4 kg
iM2500	20.5"	521 mm	11.5"	292 mm	7.2"	183 mm	21.7"	551 mm	14.1"	358 mm	8.9"	226 mm	11 lbs	5.0 kg
iM2600	20"	508 mm	14"	356 mm	7.7"	196 mm	21.2"	538 mm	16"	406 mm	8.3"	211 mm	8.5 lbs	3.9 kg
iM2620	20"	508 mm	14"	356 mm	10"	254 mm	21.2"	538 mm	16"	406 mm	10.6"	269 mm	8.5 lbs	3.9 kg
iM2700	22"	559 mm	17"	432 mm	8"	203 mm	24.6"	625 mm	19.7"	500 mm	8.6"	218 mm	11.1 lbs	5 kg
iM2720	22"	559 mm	17"	432 mm	10"	254 mm	24.6"	625 mm	19.7"	500 mm	11.7"	297 mm	16.8 lbs	7.6 kg
iM2750	22"	559 mm	17"	432 mm	12.7"	323 mm	24.6"	625 mm	19.7"	500 mm	14.4"	366 mm	18.5 lbs	8.4 kg
iM2875	22.5"	572 mm	21.1"	536 mm	11.4"	290 mm	24.9"	632 mm	23.7"	602 mm	13.1"	333 mm	20.1 lbs	9.1 kg
iM2950	29"	737 mm	18"	457 mm	10.5"	267 mm	31.3"	795 mm	20.4"	518 mm	12.2"	310 mm	20.8 lbs	9.5 kg
iM2975	29"	737 mm	18"	457 mm	13.8"	349 mm	31.3"	795 mm	20.4"	518 mm	15.5"	393 mm	22.5 lbs	10.2 kg
iM3075	29.8"	757 mm	20.8"	528 mm	17.8"	452 mm	33.3"	846 mm	24.4"	620 mm	19.3"	490 mm	31.5 lbs	14.3 kg
iM3100	36.5"	927 mm	14"	356 mm	6"	152 mm	39.8"	1011 mm	16.5"	419 mm	6.7"	169 mm	15.2 lbs	6.9 kg
iM3200	44"	1118 mm	14"	356 mm	6"	152 mm	47.2"	1198 mm	16.5"	419 mm	6.7"	169 mm	17.7 lbs	8 kg
iM3220	44"	1118 mm	14"	356 mm	8.5"	216 mm	47.2"	1198 mm	16.5"	419 mm	9.2"	234 mm	20.4 lbs	9.3 kg
iM3300	50.5"	1283 mm	14"	356 mm	6"	152 mm	53.8"	1365 mm	16.5"	419 mm	6.7"	169 mm	19 lbs	8.6 kg

iM2050	9.5"	241 mm	7.5"	191 mm	4.3"	108 mm	11.8"	299 mm	9.8"	248 mm	4.7"	119 mm	2.7 lbs	1.2 kg
iM2075	9.5"	241 mm	7.5"	191 mm	6"	152 mm	11.8"	299 mm	9.8"	248 mm	7.7"	195 mm	3.3 lbs	1.5 kg
iM2100	13"	330 mm	9.2"	234 mm	6"	152 mm	14.2"	360 mm	11.4"	290 mm	6.5"	165 mm	4.2 lbs	1.9 kg
iM2200	15"	381 mm	11.7"	297 mm	6.2"	157 mm	18.2"	462 mm	13.4"	340 mm	6.7"	170 mm	5.8 lbs	2.6 kg
iM2300	17"	432 mm	13"	330 mm	6.7"	170 mm	19.2"	488 mm	15.3"	386 mm	9"	229 mm	7.4 lbs	3.4 kg
iM2370	18.2"	462 mm	13"	330 mm	6.7"	170 mm	19.2"	488 mm	15.3"	386 mm	9"	229 mm	7.4 lbs	3.4 kg
iM2400	18"	457 mm	13"	330 mm	8.4"	213 mm	19.2"	488 mm	15.3"	386 mm	9"	229 mm	7.4 lbs	3.4 kg
iM2450	18"	457 mm	13"	330 mm	8.4"	213 mm	19.2"	488 mm	15.3"	386 mm	9"	229 mm	7.4 lbs	3.4 kg
iM2500	20.5"	521 mm	11.5"	292 mm	7.2"	183 mm	21.7"	551 mm	14.1"	358 mm	8.9"	226 mm	11 lbs	5.0 kg
iM2600	20"	508 mm	14"	356 mm	7.7"	196 mm	21.2"	538 mm	16"	406 mm	8.3"	211 mm	8.5 lbs	3.9 kg
iM2620	20"	508 mm	14"	356 mm	10"	254 mm	21.2"	538 mm	16"	406 mm	10.6"	269 mm	8.5 lbs	3.9 kg
iM2700	22"	559 mm	17"	432 mm	8"	203 mm	24.6"	625 mm	19.7"	500 mm	8.6"	218 mm	11.1 lbs	5 kg
iM2720	22"	559 mm	17"	432 mm	10"	254 mm	24.6"	625 mm	19.7"	500 mm	11.7"	297 mm	16.8 lbs	7.6 kg
iM2750	22"	559 mm	17"	432 mm	12.7"	323 mm	24.6"	625 mm	19.7"	500 mm	14.4"	366 mm	18.5 lbs	8.4 kg
iM2875	22.5"	572 mm	21.1"	536 mm	11.4"	290 mm	24.9"	632 mm	23.7"	602 mm	13.1"	333 mm	20.1 lbs	9.1 kg
iM2950	29"	737 mm	18"	457 mm	10.5"	267 mm	31.3"	795 mm	20.4"	518 mm	12.2"	310 mm	20.8 lbs	9.5 kg
iM2975	29"	737 mm	18"	457 mm	13.8"	349 mm	31.3"	795 mm	20.4"	518 mm	15.5"	393 mm	22.5 lbs	10.2 kg
iM3075	29.8"	757 mm	20.8"	528 mm	17.8"	452 mm	33.3"	846 mm	24.4"	620 mm	19.3"	490 mm	31.5 lbs	14.3 kg
iM3100	36.5"	927 mm	14"	356 mm	6"	152 mm	39.8"	1011 mm	16.5"	419 mm	6.7"	169 mm	15.2 lbs	6.9 kg
iM3200	44"	1118 mm	14"	356 mm	6"	152 mm	47.2"	1198 mm	16.5"	419 mm	6.7"	169 mm	17.7 lbs	8 kg
iM3220	44"	1118 mm	14"	356 mm	8.5"	216 mm	47.2"	1198 mm	16.5"	419 mm	9.2"	234 mm	20.4 lbs	9.3 kg
iM3300	50.5"	1283 mm	14"	356 mm	6"	152 mm	53.8"	1365 mm	16.5"	419 mm	6.7"	169 mm	19 lbs	8.6 kg



iM3300	OPTION	OPTION	OPTION	OPTION	OPTION	OPTION	OPTION	OPTION	OPTION	OPTION	OPTION	OPTION	OPTION	OPTION
iM3220	OPTION	OPTION	OPTION	OPTION	OPTION	OPTION	OPTION	OPTION	OPTION	OPTION	OPTION	OPTION	OPTION	OPTION
iM3200	OPTION	OPTION	OPTION	OPTION	OPTION	OPTION	OPTION	OPTION	OPTION	OPTION	OPTION	OPTION	OPTION	OPTION
iM3100	OPTION	OPTION	OPTION	OPTION	OPTION	OPTION	OPTION	OPTION	OPTION	OPTION	OPTION	OPTION	OPTION	OPTION
iM3075	OPTION	OPTION	OPTION	OPTION	OPTION	OPTION	OPTION	OPTION	OPTION	OPTION	OPTION	OPTION	OPTION	OPTION
iM2975	OPTION	OPTION	OPTION	OPTION	OPTION	OPTION	OPTION	OPTION	OPTION	OPTION	OPTION	OPTION	OPTION	OPTION
iM2950	OPTION	OPTION	OPTION	OPTION	OPTION	OPTION	OPTION	OPTION	OPTION	OPTION	OPTION	OPTION	OPTION	OPTION
iM2875	OPTION	OPTION	OPTION	OPTION	OPTION	OPTION	OPTION	OPTION	OPTION	OPTION	OPTION	OPTION	OPTION	OPTION
iM2750	OPTION	OPTION	OPTION	OPTION	OPTION	OPTION	OPTION	OPTION	OPTION	OPTION	OPTION	OPTION	OPTION	OPTION
iM2720	OPTION	OPTION	OPTION	OPTION	OPTION	OPTION	OPTION	OPTION	OPTION	OPTION	OPTION	OPTION	OPTION	OPTION
iM2700	OPTION	OPTION	OPTION	OPTION	OPTION	OPTION	OPTION	OPTION	OPTION	OPTION	OPTION	OPTION	OPTION	OPTION
iM2620	OPTION	OPTION	OPTION	OPTION	OPTION	OPTION	OPTION	OPTION	OPTION	OPTION	OPTION	OPTION	OPTION	OPTION
iM2600	OPTION	OPTION	OPTION	OPTION	OPTION	OPTION	OPTION	OPTION	OPTION	OPTION	OPTION	OPTION	OPTION	OPTION
iM2500	OPTION	OPTION	OPTION	OPTION	OPTION	OPTION	OPTION	OPTION	OPTION	OPTION	OPTION	OPTION	OPTION	OPTION
iM2450	OPTION	OPTION	OPTION	OPTION	OPTION	OPTION	OPTION	OPTION	OPTION	OPTION	OPTION	OPTION	OPTION	OPTION
iM2400	OPTION	OPTION	OPTION	OPTION	OPTION	OPTION	OPTION	OPTION	OPTION	OPTION	OPTION	OPTION	OPTION	OPTION
iM2370	OPTION	OPTION	OPTION	OPTION	OPTION	OPTION	OPTION	OPTION	OPTION	OPTION	OPTION	OPTION	OPTION	OPTION
iM2306	OPTION	OPTION	OPTION	OPTION	OPTION	OPTION	OPTION	OPTION	OPTION	OPTION	OPTION	OPTION	OPTION	OPTION
iM2300	OPTION	OPTION	OPTION	OPTION	OPTION	OPTION	OPTION	OPTION	OPTION	OPTION	OPTION	OPTION	OPTION	OPTION
iM2200	OPTION	OPTION	OPTION	OPTION	OPTION	OPTION	OPTION	OPTION	OPTION	OPTION	OPTION	OPTION	OPTION	OPTION
iM2100	OPTION	OPTION	OPTION	OPTION	OPTION	OPTION	OPTION	OPTION	OPTION	OPTION	OPTION	OPTION	OPTION	OPTION
iM2075	OPTION	OPTION	OPTION	OPTION	OPTION	OPTION	OPTION	OPTION	OPTION	OPTION	OPTION	OPTION	OPTION	OPTION
iM2050	OPTION	OPTION	OPTION	OPTION	OPTION	OPTION	OPTION	OPTION	OPTION	OPTION	OPTION	OPTION	OPTION	OPTION

To determine item number for ordering:
Example: Yellow 18x13x6 (interior) case, black latches, buttons and Vortex valve, with multilayer cubed foam – iM2400-2001.

Case Colors
 0-Black
 1-Gray
 2-Yellow
 3-Blue Dab
 4-Orange
 C-Coyote

Latch Color
 0-Black
 1-Black

Button Color
 0-No Foam
 1-Multilayer
 2-Padded Dividers

Vortex Valve Color
 0-Black
 1-Black

(Foam)
 (Vortex Valve)
 (Button Color)
 (Latch Color)
 (Case Color)

iM2400-2001
 (Model Number)

Storm Case Standard Equipment
 Foam is solid layers, not cubed

Storm Case Optional Equipment
 * These options are available as add-on kits only, require additional assembly.

Other Optional Equipment:
 • Shoulder Straps
 • Custom Cut Foam
 • 3-D Logo Application
 • iM3100 through iM3300 comes with multilayer solid foam.

Customized Product & Packaging
 To talk about custom-use cases or to order custom labeled, molded-in 3-D graphics, foil stamped or private label packaging, contact us through stormcase.com or call 1-800-542-7344.

OPTION